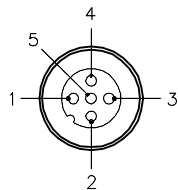


# MALE END VIEW



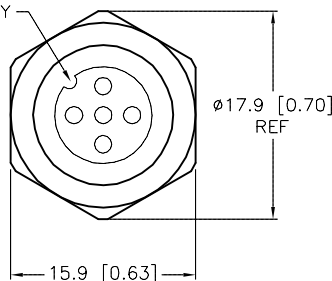
1 = BROWN  
2 = WHITE  
3 = BLUE  
4 = BLACK  
5 = GRAY



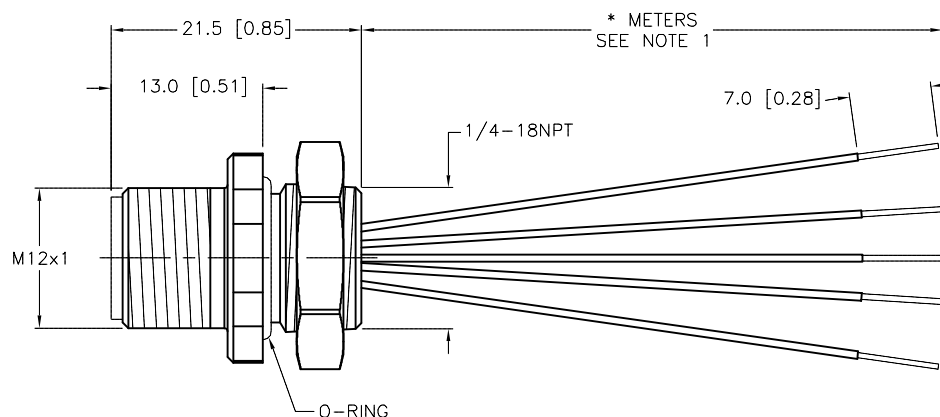
# SPECIFICATIONS

|                               |                                   |
|-------------------------------|-----------------------------------|
| CONTACT CARRIER MATERIAL      | NYLON OR TPU                      |
| CONTACT MATERIAL/PLATING      | BRASS/GOLD                        |
| HOUSING MATERIAL/PLATING      | BRASS/NICKEL                      |
| O-RING MATERIAL               | NITRILE                           |
| RATED CURRENT [A]             | 4.0 A                             |
| RATED VOLTAGE [V]             | 250 V                             |
| CONDUCTOR INSULATION MATERIAL | PVC                               |
| NUMBER OF CONDUCTORS [AWG]    | 5x22 AWG                          |
| TEMPERATURE RATING            | -40°C to +105°C (-40°F to +221°F) |
| PROTECTION CLASS              | MEETS NEMA 1,3,4,6P AND IEC IP68  |

KEYWAY ORIENTATION  
MAY VARY



END VIEW  
LOCKNUT REMOVED

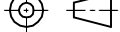


| CABLE LENGTH                | TOLERANCE*  |
|-----------------------------|---|
| ALL LENGTHS                 | + 4% (OR 50mm) OF LENGTH<br>- 0% (OR 0mm) OF LENGTH<br>WHICHEVER IS GREATER |
| STRIP LENGTH                | TOLERANCE*  |
| 0-7mm                       | ±0.5mm  |
| 8-29mm                      | ±1.0mm  |
| 30-49mm                     | ±2.0mm  |
| 50-69mm                     | ±3.0mm  |
| 70-100mm                    | ±4.0mm  |
| OVER 100mm                  | ±5.0mm  |
| *UNLESS OTHERWISE SPECIFIED |   |

## NOTES:

1. "\*" DESIGNATES LEAD LENGTH IN METERS. CONTACT TURCK TO ORDER SPECIFIC LENGTHS.

SOURCE DRAWING - FOR REFERENCE ONLY

|   |   |  |                     |       |                 |                                   |              |
|---|---|--|---------------------|-------|-----------------|-----------------------------------|--------------|
| RELATED DOCUMENTS<br><br>1.<br><br>2.<br><br>3.<br><br>4. | 3RD ANGLE PROJECTION  | <div>THIS DRAWING IS CONFIDENTIAL AND THE PROPERTY OF TURCK INC. USE OF THIS DOCUMENT WITHOUT WRITTEN PERMISSION IS PROHIBITED.</div> <div><b>TURCK INC</b><br/><i>High Technology Sensors and Automation Controls</i></div> <div>3000 CAMPUS DRIVE<br/>MINNEAPOLIS, MN 55441<br/>1-800-544-7769<br/>(763) 553-7300<br/>(763) 553-0708 fax<br/>turck.com</div> |                     |       |                 |                                   |              |
|   |  |  |                     |       |                 |                                   |              |
|   |   |  |                     |       |                 |                                   |              |
|   |   |  |                     |       |                 |                                   |              |
| MATERIAL  | ALL DIMENSIONS DISPLAYED ON THIS DRAWING ARE FOR REFERENCE ONLY                       | DRFT   | RWC                 | DATE  | 05/06/05        | DESCRIPTION<br><br>FS 4.5-*/18.25 |              |
| SEE SPECIFICATIONS  |   | APVD   |                     | SCALE | 1=.7            |                                   |              |
| FINISH  |   | CONTACT TURCK FOR MORE INFORMATION   | UNIT OF MEASUREMENT |       |                 | IDENTIFICATION NO.                | REV<br><br>D |
| SEE SPECIFICATIONS  |   |  | MILLIMETER [ INCH ] |       |                 |                                   |              |
|   |   | DO NOT SCALE THIS DRAWING  |                     |       | FILE: 777003684 | SHEET 1 OF 1                      |              |

|     |              |    |          |         |
|-----|--------------|----|----------|---------|
| D   | ADD END VIEW | NF | 01/12/16 | 53050   |
| REV | DESCRIPTION  | BY | DATE     | ECO NO. |